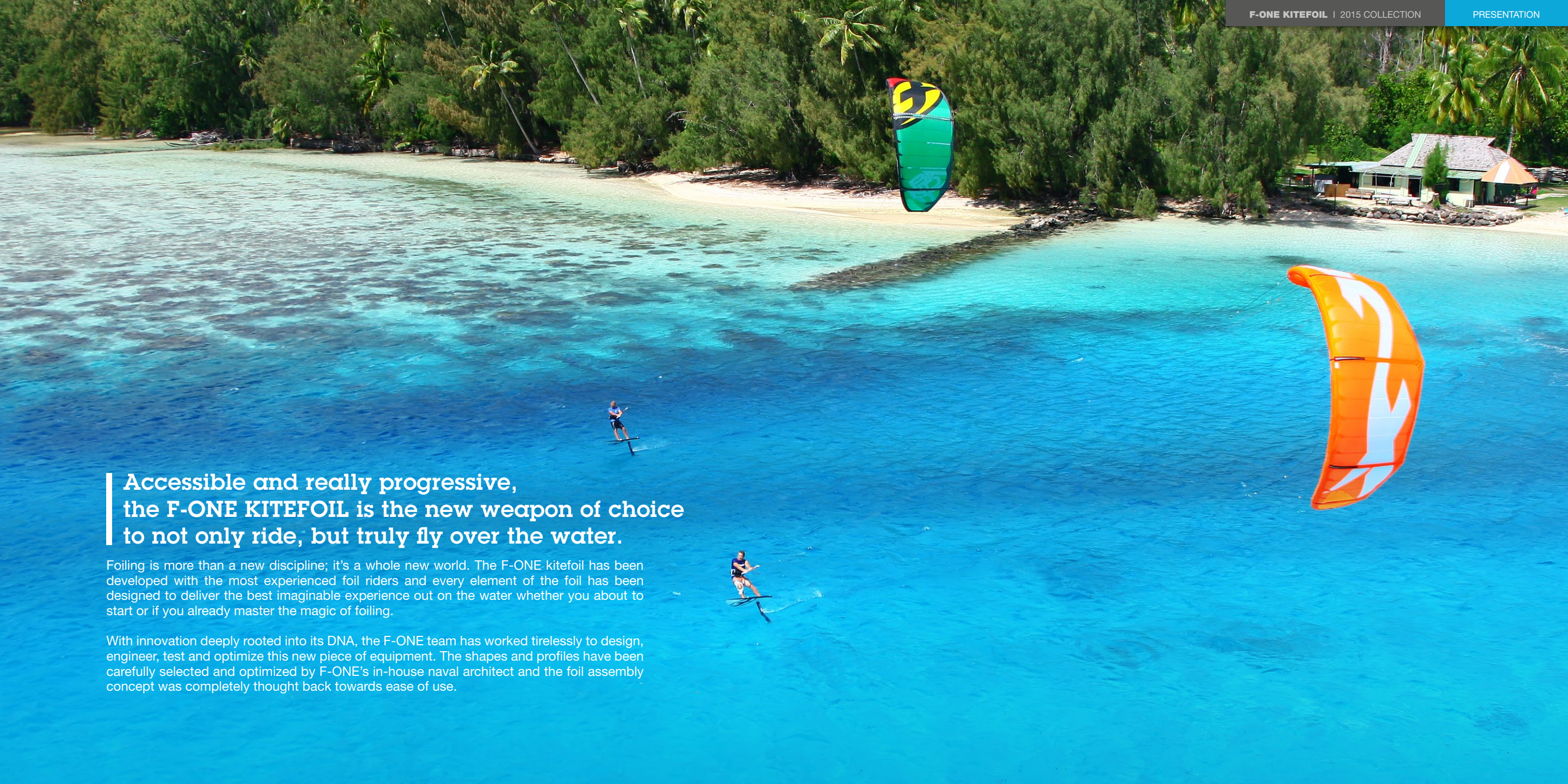


KITEFOIL 2015 collection



fone



**Accessible and really progressive,
the F-ONE KITEFOIL is the new weapon of choice
to not only ride, but truly fly over the water.**

Foiling is more than a new discipline; it's a whole new world. The F-ONE kitefoil has been developed with the most experienced foil riders and every element of the foil has been designed to deliver the best imaginable experience out on the water whether you about to start or if you already master the magic of foiling.

With innovation deeply rooted into its DNA, the F-ONE team has worked tirelessly to design, engineer, test and optimize this new piece of equipment. The shapes and profiles have been carefully selected and optimized by F-ONE's in-house naval architect and the foil assembly concept was completely thought back towards ease of use.

THE TEAM



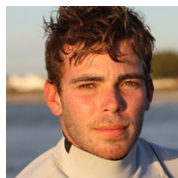
Marc BLANC

He's an emblematic figure in kitefoiling, he teaches it at his kite school, he is widely considered an expert in the discipline and possesses an incredible amount of ease in riding and general knowledge of foiling. His feedback in testing was crucial. He was able to feel the slightest modification and provide great input to improve and bring new ideas to the design.



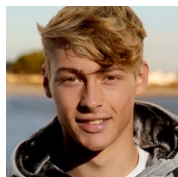
Alex CAIZERGUES

Speed specialist, multiple time speed record holder, he has been foiling for many years. He also contributed a lot to the design of the Foil which, as he was able to test it at high speeds and explain the sensations he was getting while riding.



Maxime NOCHER

Race world champion and 3rd of the Foiling World Championship, he is a very sharp racer and is highly involved into the development of his gear. He has just joined the team and brings a very detailed analysis of the Foil to push the development further, especially regarding the Racing and Long Distance disciplines.



Romcain CASTEL

Multiple Race and Long Distance youth champion, he is part of the rising generation who puts a lot of involvement to test, develop, provide feedback and push the boundaries.



Raphaël SALLES & Micka FERNANDEZ

They both recently started foiling, which provided plenty of feedback from a beginner's view and allowed us to focus on the key components of the foil design.



Charles BERTRAND

Part of the F-ONE R&D team, he is qualified in naval architecture and fluid dynamics. His knowledge in force mechanics, structural analysis and fluid behavior have been key to develop some products that not only fit the design brief but also innovate and achieve real improvements to bring the sport forward.



F-ONE KITEFOIL

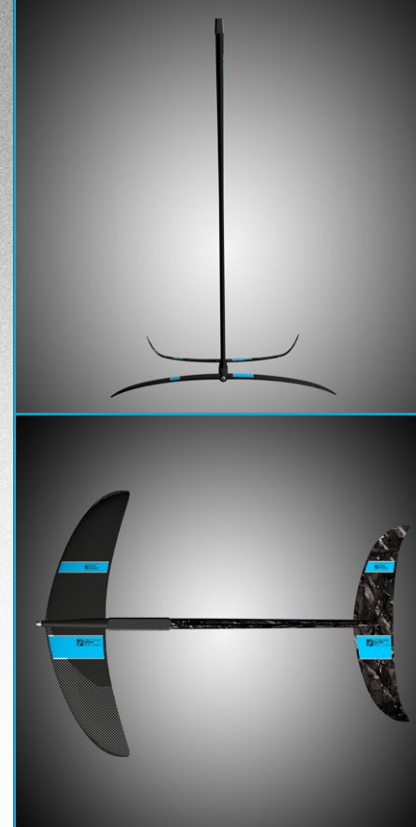


FACTORY

FROM R&D TO PRODUCTION

After checking with our usual factories and others in Asia, we realized that we needed a factory that was very specialized and close to us. This brought our production back to France. Our foils will be made in France using “**Pre-preg**” technology while certain parts will be made out of “**Forged Carbon**”, a technology emanating from the aeronautical and military industries.

MADE IN FRANCE



TECHNOLOGIES

FROM R&D TO PRODUCTION



With Pre-preg fabrics, the carbon fiber is directly impregnated with epoxy resin by its manufacturer; this guarantees a perfect ratio between epoxy and carbon, and represents the highest quality process. The material is stored in cooled rooms and catalyzes at 120° C in a mold. The Pre-preg fibers must travel in refrigerated trucks and be stored frozen. The refined ratio between carbon fiber and epoxy resin provides the lightest weight with the best mechanical properties of carbon fiber.



This technology takes advantage of the same principles as standard Pre-preg but uses a different type of fiber which is better suited to mold small parts with complex shapes. It allows us to build accurately smaller sized parts that are very reliable. The advantages of these two technologies are their high end mechanical properties, but also their fast production cycle which allows us to work with a faster and more rational construction process. (1h to cure a Pre-preg mast and about 10 minutes for a Forged Carbon part). This is crucial for delivering a high quality product made in France.



F-ONE kitefoils are equipped with the fully conical KF-BOX. Its shape makes it easy to connect and fits well with the thickness of the kite boards due to its moderate height. The KF-BOX offers a perfect, tight support and is compatible with all F-ONE and KETOS foils.

The advantages of these two technologies are their high end mechanical properties, but also their fast production cycle which allows us to work with a faster and more rational construction process. This is crucial for delivering a high quality product made in France.



- ① KF-BOX male end
- ② Pre-impregnated, multi-axial carbon layers
- ③ Forged Carbon

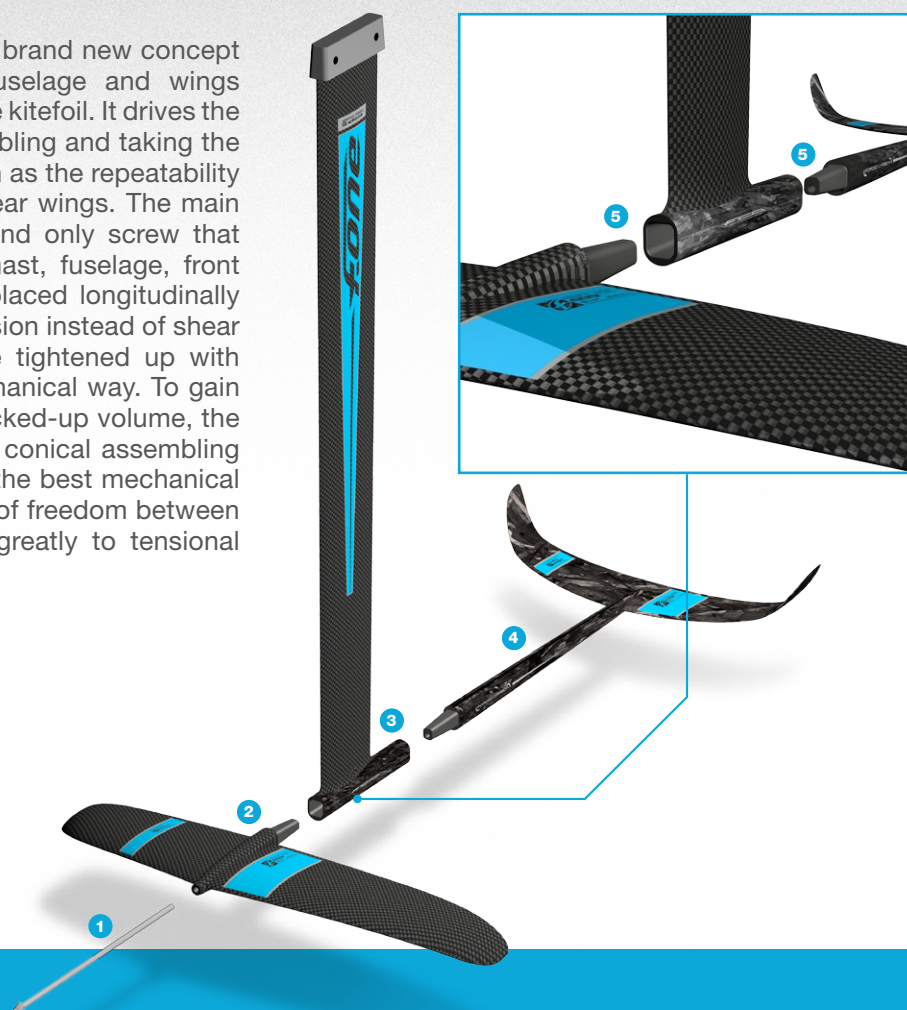
TECHNOLOGIES

FAST CONNECTION DEVICE PATENT

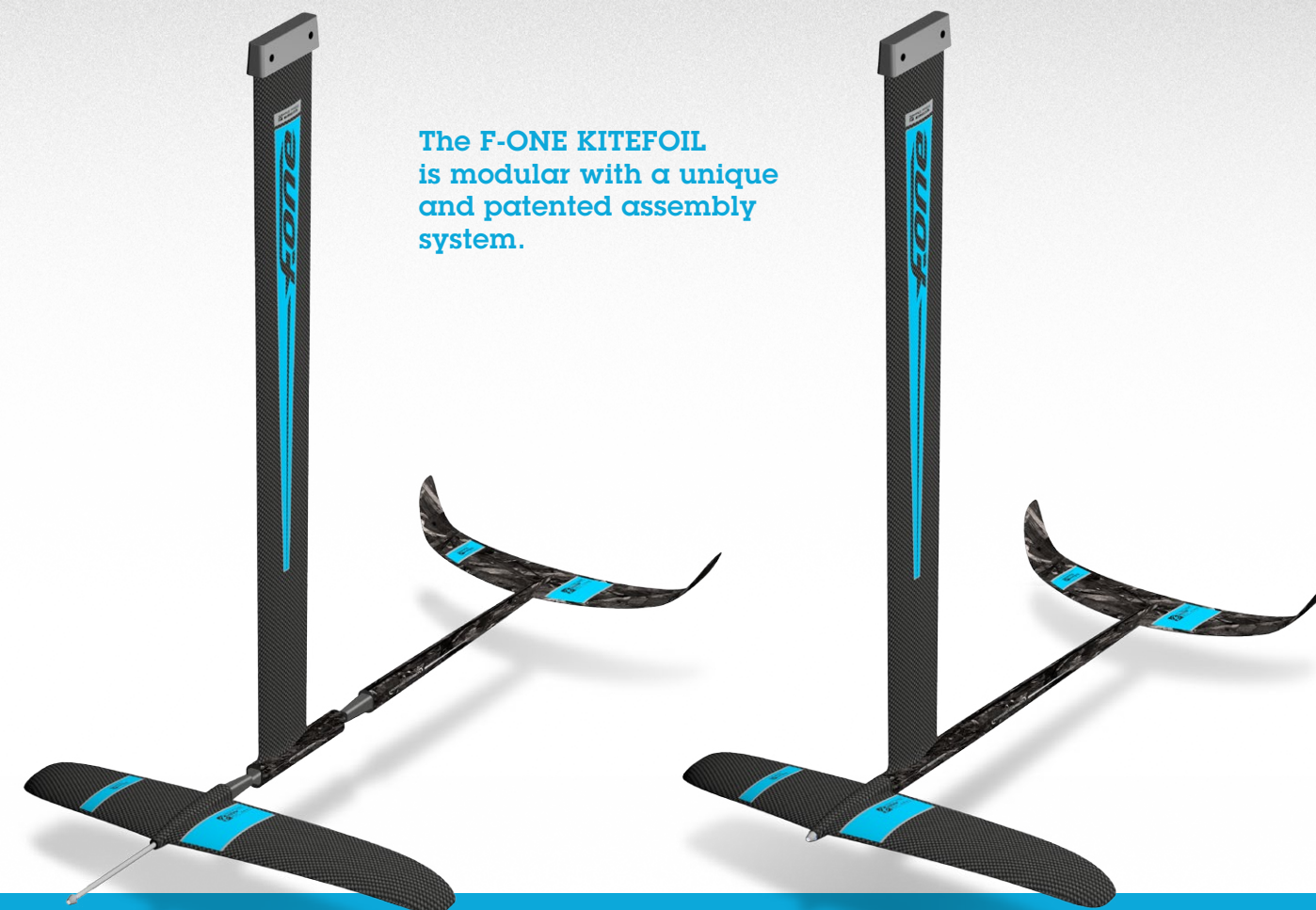


We have developed and patented a brand new concept for the assembly of the mast, fuselage and wings because this is a critical aspect of the kitefoil. It drives the reliability and ease of use for assembling and taking the foil apart for transportation, as much as the repeatability of the trim between the front and rear wings. The main benefit of the system is the one and only screw that maintains all the parts together: mast, fuselage, front wing and stabilizer. This screw is placed longitudinally and is therefore only stressed in tension instead of shear or bending. The whole foil can be tightened up with everything working in a sound mechanical way. To gain some precision, robustness and packed-up volume, the screw is combined with a squared, conical assembling system, which has been proven as the best mechanical setup to lock any motion or degree of freedom between the parts, while also contributing greatly to tensional resistance.

- 1 Longitudinal screw
- 2 Front Wing
- 3 Mast
- 4 Stabilizer
- 5 Squared & conical assembling system



The F-ONE KITEFOIL is modular with a unique and patented assembly system.



ASSEMBLY & DISASSEMBLY

THE KITEFOIL POINT-BY-POINT

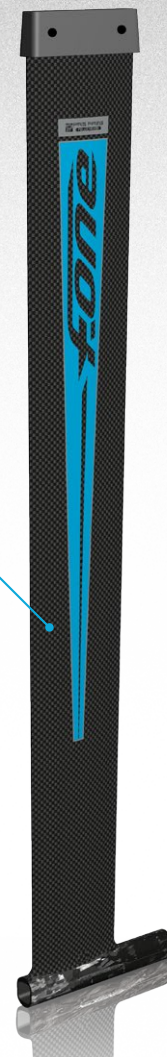
Using the patented “Fast Connection Device”, the F-ONE kitefoils can be assembled in minimum time using one single screw. Saving time, this system also saves you space as the complete foil can be split into three separate parts which all fit within convenient space for traveling. Less parts, less volume, less hassle! Yet, the most user-friendly aspect of the FCD system is that it guarantees the perfect alignment of your wings and profiles over time, session after session. No tuning is ever required, just plug the parts together

and go riding with complete peace of mind. Building from the best available materials and technologies is not only key to the top performances but is also proving critical to provide a package fit for learning efficiently. Made of compression molded Pre-preg and Forged Carbon, the F-ONE kitefoil makes the most of the best technologies to offer a truly innovative and top of the range product.

F-ONE 88 cm Mast

With a depth of 88 cm, the mast offers great performances and comfort without being intimidating or proving too long when starting off in onshore winds or shallower waters. Using a specific profile promoting laminar flow to reduce friction, the mast keeps a thickness of 12 mm all along its bottom half to ensure minimum drag. The profile thickness then increases rapidly towards the top of the mast for more stiffness. Torsion and bending motions are locked by its elaborate one shot construction to make the mast super stiff. The mast is fitted with the proven KF-BOX equipped with two fixing screws for more reliability.

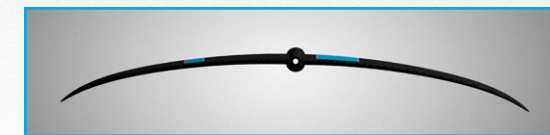
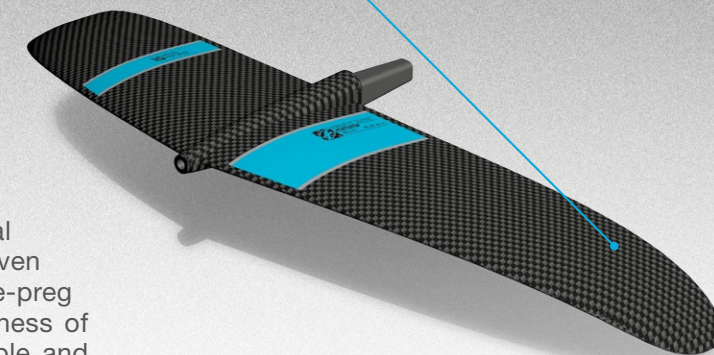
Using the patented “Fast Connection Device”, the F-ONE kitefoils can be assembled in minimum time using one single screw.



F-ONE Freeride Wing 595 cm²

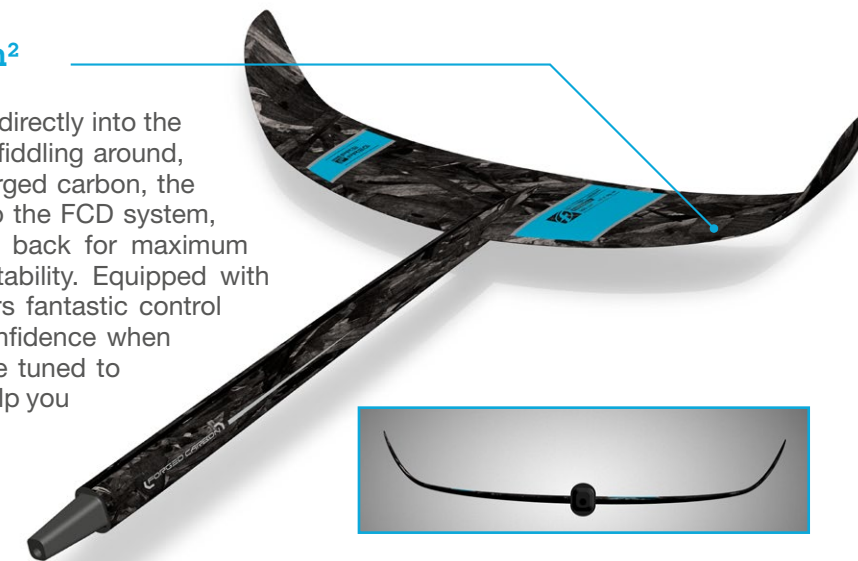
We wanted to design a wing that was truly versatile and progressive. When we realized that even the most experienced within our team loved to ride with the wing we had developed for novice riders, we knew we had succeeded. With a span of 58 cm and a surface area of 595 cm² this blade has enough grunt to lift you out of the water effortlessly even in marginal conditions but will remain easy and fluid to handle even at pace thanks to its refined profile. Built using Pre-preg carbon over a Forged Carbon central core, the stiffness of the blades has been finely tuned to make it as stable and predictable as possible.

With great directional control and plenty of surface area to rely on, the F-ONE freeride wing can be pressed hard to reach higher speeds if this is what you're after and will be the key to successfully mastering air jibes and other flying maneuvers.



F-ONE Freeride Stabilizer 305 cm²

The one-part stabilizer and fuselage unit fits directly into the FCD bottom of the mast, plug and play, no fiddling around, it's as simple as that. Built entirely out of forged carbon, the freeride stabilizer is rock solid and thanks to the FCD system, we were able to extend the fuselage way back for maximum stability without compromising its transportability. Equipped with generous winglets, the stabilizer blade offers fantastic control with enough surface area to provide full confidence when learning. Its profile and angle of attack were tuned to achieve a more intuitive balance which will help you get your foiling maneuvers in more easily.



F-ONE FOILBOARDS |





This board was created to be a 100% dedicated foil board with the specific characteristics required to practice and master rapidly this new discipline.

This board was created to be a 100% dedicated foil board with the specific characteristics required to practice and master rapidly this new discipline. With its large volume and wide tail the board is really well suited to beginners. It generates enough buoyancy at low speeds and gives a lot of flexibility with footstrap placements. Compact in design to reduce wind aero drag, the deck features a nice concave to maximize comfort and control. The bottom is shaped in a triple V section with a precisely tuned concave, combined with a strong nose rocker to soften the impact when the board touches down. The rails are high and inverted to reduce drag when the board hits the water while edging hard upwind. Equipped with multiple footstrap attachment points to fit everyone's needs, it is also equipped with the entirely conical KF-BOX which facilitates the assembly and is compatible with all F-ONE and KETOS foils.

F-ONE FOILBOARD

5'1"

156 x 51 cm
30 L
3.5 kg*

BAMBOO
SANDWICH TECHNOLOGY

K.F BOX

CONCAVE
DECK

EQUIPMENT

Full pads
K.F BOX
F-ONE surf straps (optional)

*Indicative values, subjected to slight variations.

FOILBOARDS |

Foil convertible
2015





We decided to offer a board which was a 2 for 1.

We all know that kiting can be onerous, so we also decided to offer a board which was a 2 for 1. The super popular surf Pro Model MITU MONTEIRO is therefore available in its “convertible” version for sizes 5’6” / 5’8” / 5’10”: equipped with a KF-BOX you will be able to adapt F-ONE and KETOS foils underneath. The concave on the bottom of the board allows a prompt acceleration to lift off easily while the rocker and outline of the pro model MITU MONTEIRO makes for easy transitions and progression when the board lands back onto the water. With its pad designed for strapless riding, the board gives you full flexibility with your stance for maximum comfort and stability. With its very efficient and all around shape combined with the new construction HD FOAM FLEX COMPOSITE, tough and light, the surf MITU MONTEIRO Convertible is simply the perfect board to not miss a session anymore and still keep a light quiver.

PRO MODEL Mitu MONTEIRO FOIL CONVERTIBLE

| 5'10" | 5'8" | 5'6" |
|-----------------|---------------|-----------------|
| 176.5 x 48.5 cm | 171.5 x 47 cm | 166.5 x 46.5 cm |
| 21 L | 20 L | 19 L |
| 3.750 kg* | 3.670 kg* | 3.450 kg* |



- New **HD FOAM FLEX COMPOSITE** construction
- New **HEEL SHOCK ABSORBER**
- **CAMEL DECK**
 - New size 5'6" x 46.5 cm
 - Width reduced by 1 cm on all sizes
 - New nose channel
 - New front pad kick
 - Redesigned compact grab rail
 - Lighter weight
 - Increased versatility
 - Amazing feeling !!

EQUIPMENT

Full pads
FUTURES® fins
FUTURES® box
K.F BOX (+ box shutter)
F-ONE surf straps (optional)

*Indicative values, subjected to slight variations.





F-ONE SAS

ZAC de la Méditerranée
170, Route de la Foire
34470 PÉROLS - FRANCE

Tél. +33 (0) 4 67 99 51 16
Fax. +33 (0) 4 67 99 61 93

www.f-onekites.com

