

TRUST

2015

COLLECTION

ENGLISH



Fone

PRO GRAM

Designed for FREERIDING, the 2015 TRUST is a completely new kite easier to use and yet with better performances. It benefits from all the work and progress achieved in terms of construction and shape with its elder sibling the 2015 BANDIT.



PRES ENTA TION

With an incredible speed control, the TRUST will make it easier for the riders to carve and dampen the waves and chop. Its exceptional upwind capabilities with flawless stability at 12 o'clock make it the perfect partner.

The construction features a new fabric, the well known TECHNOFORCE™ double rip stop from TEIJIN. With superior resistance, robustness and more stability, this new fabric enables an unprecedented control of the canopy profiles.

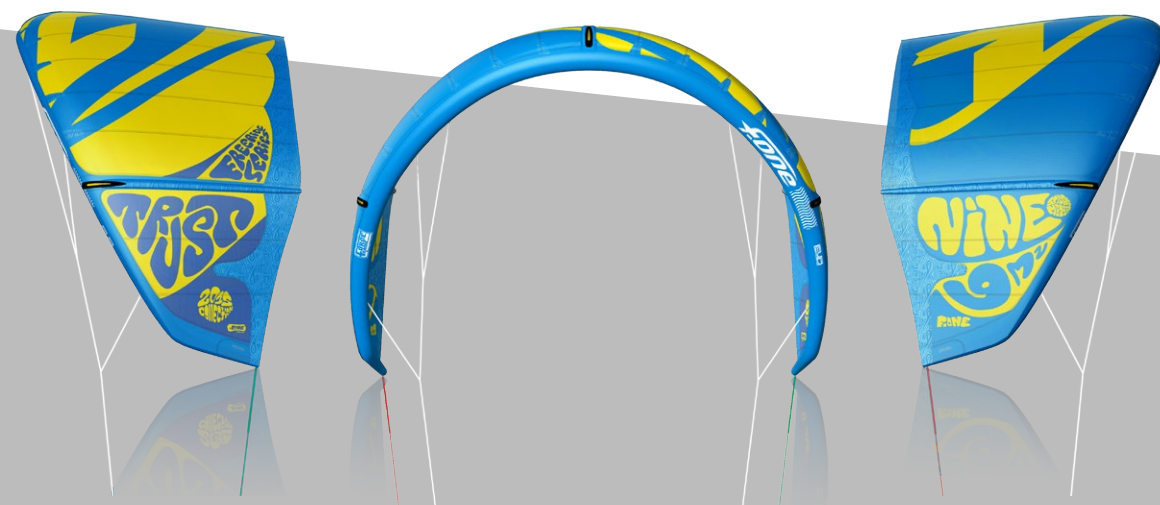
The 2015 TRUST also benefits from new reinforcements and a more balanced distribution of the tensions across the canopy fabric. One Pump valves have been further optimized.

Thanks to the new fabric, it was possible to improve significantly the kite profiles with some neat gains in performances and ease of use.

Remaining incredibly intuitive and stable to steer, with excellent power control and speed, the kite still demonstrates the best relaunch capacities. The 2015 TRUST makes it easier to ride underpowered without stalling the kite with power constantly available and easy to regulate. In the high range, the TRUST doesn't pull laterally and can be eased progressively to head higher into the wind in complete comfort and making upwind riding as easy as it can get.

The bar feeling is more pressed for a more expressive feedback of information which will help the less experienced riders.

The TRUST is designed to fly with complete control any kind of wind conditions. Its behavior is reassuring and will give you full confidence to improve and push your level.



R&D



Its Delta C Shape geometry, created and developed by F-one, remains the most acclaimed recent evolution to enable an easy relaunch.

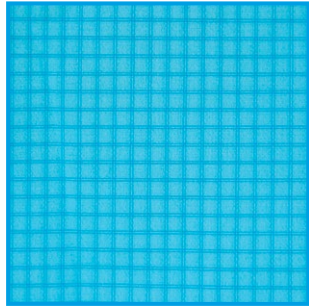
The AUTO RELAUNCH system will let the TRUST relaunch easily without requiring any complex procedure and will let you ride with full peace of mind. Diagonal webbings are located at the tip of the struts for more safety to avoid catching the lines. The kite can be neutralized easily when triggering the safety release as it will simply land on its back with no traction force thanks to the EVO bridle setup.

The whole range has been redefined so as to offer a very consistent set of kites which all share the same qualities and feeling. There is no adaptation required from one size to another one.

The 2015 TRUST is therefore a really high performing kite while remaining very accessible and easy to ride. With its very smooth and predictable behavior, it offers a uniquely intuitive steering. This kite will be the perfect ally to make the most of your sessions and enjoy some amazing sensations.

Blue / Yellow





TECHNOFORCE™ FABRIC

TECHNOFORCE™ is a high density fabric with a tear stopping structure using thin and high tension yarn.

TECHNOFORCE™ Double Ripstop Fabric

TECHNOFORCE™ is the trademark of TEMIN FIBERS LIMITED

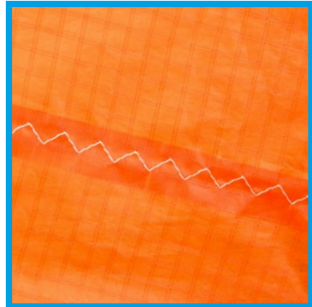


F-ONE PULLEY

- Pulley structure is extremely resistant.
- Bridle is integrated in the lower part of the pulley, working in its axle and not sideways.
- Pulleys can be removed independently from the bridle, you can change the bridle and keep the pulley or vice versa.

FLAT SEWING

Stronger assembly of the panels: they are now glued and sewn together to make the canopy more rip resistant.



VERTICAL CUT BATTEN

The TRUST struts are designed with a vertical cut in order to optimize the strength/diameter ratio.



KEVLAR REINFORCEMENT ON LEADING EDGE

Most seams on the leading edge are now reinforced with Kevlar to prevent the seams to deteriorate on aggressive ground friction.



PROFILE LEADING EDGE END TIPS

The leading edge tips are profiled and have a reduced diameter to avoid any bridles tangling and drag effect.



TECHNOLOGIES



TRAILING EDGE

The shape of the trailing edge panels is no more linear but with a series of arches in order to improve distribution of the tensions, and thus improve stability and performances.



ONE PUMP RING

This sliding ring clips onto the one-pump tube to secure it in place. It slides easily and makes it effortless to change the bladder. One Pump valves positions have been further optimized.



CANOPY REINFORCEMENT

Dacron added on the front part of the kite solidifies this primordial part and reinforces this great friction zone.



KITE TUNING

Two different positions for back lines.

Front: more bar pressure, slower turning kite.
Back: lighter bar pressure, faster turning kite.



COLORS COMBO



Blue / Yellow

Blue / Orange



Pink / Blue

Green / Orange

| SIZE (m²) | 05 | 06 | 07 | 08 | 09 | 11 | 13 |
|-------------------|------|------|----|---------|---------|---------|--------|
| WIND RANGE (knts) | 30 + | 28 + | 25 | 20 > 35 | 15 > 30 | 11 > 24 | 9 > 18 |

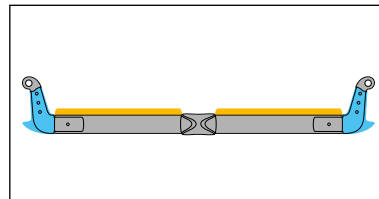


ACCESSORIES



SAFETY SYSTEM

Designed to work effectively even in the most critical situations, it can be triggered under load but also when the lines are slack. A stopper at the top holds the kitebar to make sure the system works even when the bar is pushed towards the rider and blocked in the lowest position. Its new push-away system enables to trigger the release with minimal force even under the highest loads (tested up to 400 kg).



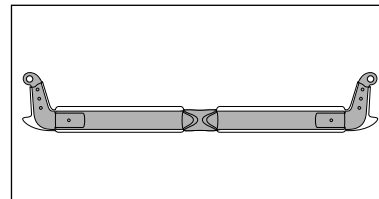
COMFORT

For increased safety and comfort, the bar ends are molded with a soft material. The anti-sliding thermoformed grip also has a double EVA layer on top of the bar.



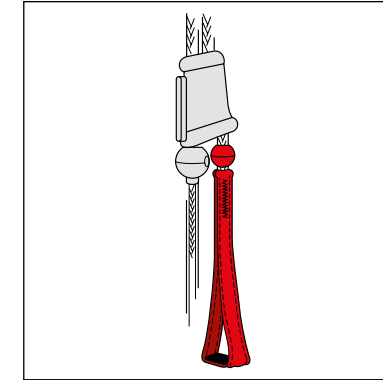
"SUICIDE LEASH" MODE

With its new larger 5th line ring, the new F-ONE Push-Away system offers a leash set-up enabling to release at any moment, including in Suicide Leash mode.



ANTI-CORROSION

The MONOLITH bar benefits from a new anodizing process that reinforces the external structure of the bar and blocks all corrosion.



DEPOWER SYSTEM

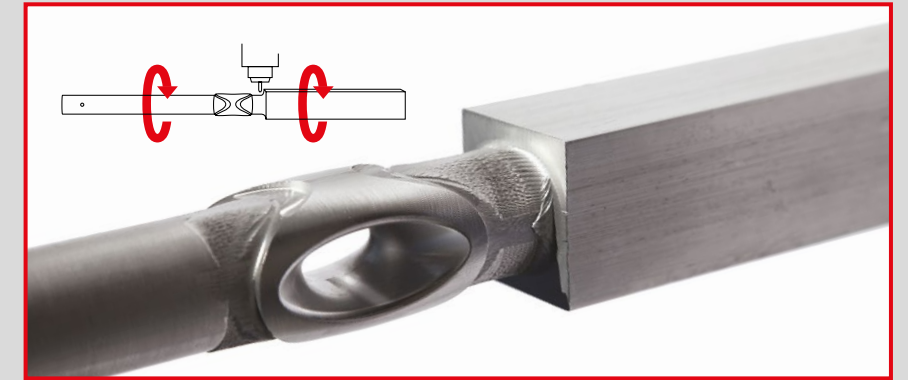
The F-ONE depower system is ultra intuitive, resulting in great efficiency and reliability. We are using a rope cleat from Clamcleat®, the reference in the world of sailing.

THE MONOLITH BAR SETUP
IS COMPATIBLE WITH
THE BANDIT FROM 4 TO 8
& TRUST 2014

NORM :
NF S 52-503

MONOLITH BAR

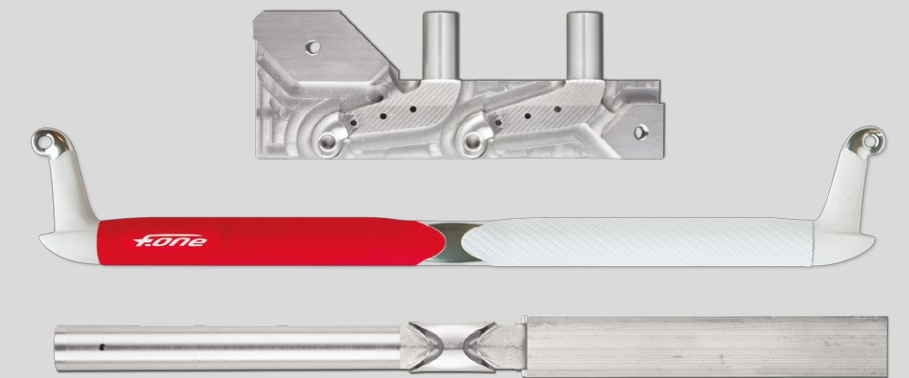
CARVED ALUMINIUM CORE



CNC CARVED

The MONOLITH BAR is milled straight out of an Aluminum 6061 block. This CNC process make it possible to get a solid, one-piece bar. Aluminum 6061 is a high strength alloy enriched with magnesium and silicon, which is widely used in the aerospace industry.

Together with its strength and stiffness, it offers excellent corrosion properties.







F-ONE SAS

ZAC de la Méditerranée
170, Route de la Foire
34470 PÉROLS - FRANCE

Tél. +33 (0) 4 67 99 51 16

Fax. +33 (0) 4 67 99 61 93

www.f-onekites.com